



PRESENTATION

- LED SMD digital indoor clock with built-in temperature sensor.
- Hour and minute display (HM).
- Fixed time display, or alternating with other information.
- Wall or bracket arm mounting (standard version).
- Available LED colours: red, green, yellow, blue and white.

COMPLIANCE

- Directives: LVD 2014/35/EU, EMC 2014/30/EU, RED 2014/53/EU, IEEE 802.11 b/g/n (NTP/Wi-Fi model).

TECHNICAL FEATURES

General features

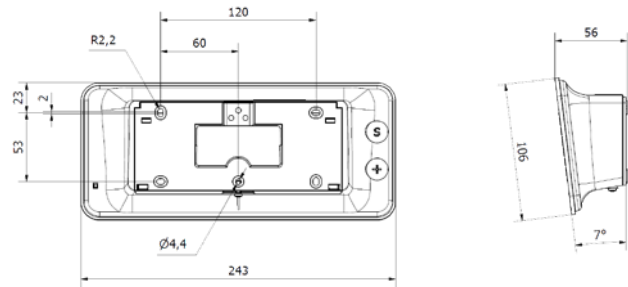
- Reading distance..... 30m.
- Reading angle..... 160°
- Digits.....
 - Height: 5 cm.
 - Design: 7 segments with 3 LEDs each.
- HM separation..... Colon made of LEDs.
- Display.....
 - 12H or 24H mode.
 - With or without 0 for hour, day and month (NTP/ETH model)
 - AM/PM indicator.
- Alternating display.....
 - Date : day/month, month/day, month/year, year/month.
 - Number: day of the year, week of the year.
 - Temperature: °C.
- Brightness..... 4 levels: 25%, 50%, 75% or 100%.
- Eco mode..... Programmable energy saving or pre-defined over a time period. Brightness level can be adjusted in eco mode (NTP/ETH model).
- Time change..... Automatic summer/winter time changeover and perpetual calendar.
- Time base backup.....
 - Independent model: 15 days in case of power failure.
 - Impulse model: in case of power failure, data saving and impulse reception without battery.
 - NTP model: behaviour can be programmed in case of loss of synchronisation after more than 48h.
 - Other models: at each start up, the clock waits for a synchronisation signal.
- Time accuracy..... 0.1 sec /day at 25°C.
- Operation..... Silent.
- Configuration..... 2 touch-screen buttons.
- NTP/ETH et NTP/Wi-Fi models.....
 - Unicast, multicast and DHCP synchronisation.
 - Advanced and intuitive configuration from the embedded web server.



Standard version

Mechanical features

- Construction..... Casing: Black PC/ABS. Other colours upon request. Glass: Anti-glare PMMA glass (matte finish)
- Protection index..... IP40, IK07
- Operating temperature.... -5°C to +55°C.
- Weight..... 0.35 kg.
- Dimensions..... See hereinafter.



Dimensions in mm

Electrical features

- Power supply.....
 - Independent, impulse, AFNOR, DHF radio and NTP/Wi-Fi models: 100-240V~.
 - ALS+ DCF radio model: 230V~.
 - NTP/ETH model: PoE (Power over Ethernet) – Class 0.
- Max consumption
 - 100-240V~, 250-150 mA.
 - 230V~, 35 mA.
 - NTP/ETH model:
 - red, green, yellow: 3W.
 - blue, white: 1.5W.
- Electrical protection.....
 - NTP/ETH model: Class 3.
 - Other models: Class 2.



Time management

Synchronising • Distributing • Displaying time

Style 5 - Standard



www.bodet-time.com

MADE IN FRANCE

REFERENCES) - STYLE 5 STANDARD

- 946 11x..... Independent model.
- 946 12x..... Impulse model.
- 946 13x..... ALS+ DCF model.
- 946 14x..... DHF model.
- 946 15x..... AFNOR model.
- 946 17x..... NTP/ETH model
- 946 18x..... NTP/Wi-Fi model.

Replace the "x" in the reference number to specify the LED colour:



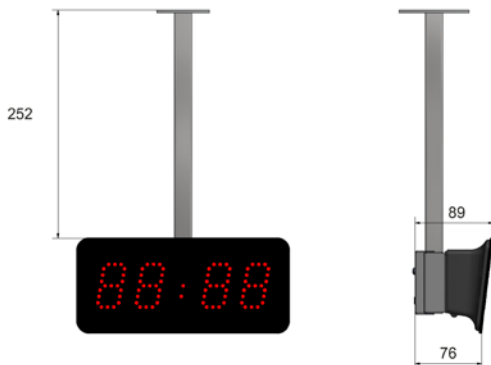
ACCESSORIES- STYLE 5 STANDARD

- 946 001..... Double-sided bracket arm
- 946 002..... Single-sided bracket arm.
- 946 040..... IK10 protection index
- 946 080..... External Wi-Fi antenna.

Bracket arm mounting (ceiling or mast)

- Construction..... Black steel.

Bracket arm (single sided mounting)

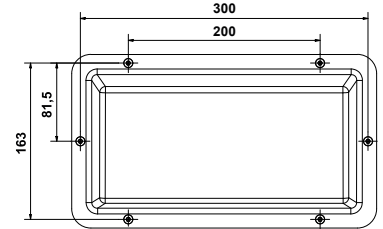
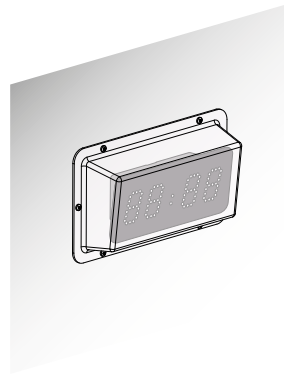


Bracket arm (double sided mounting)



IK10 protection index

- Construction..... Transparent polycarbonate.



Dimensions in mm



Time management

Synchronising • Distributing • Displaying time

Style 5 - Recess mounted



www.bodet-time.com

MADE IN FRANCE

PRESENTATION

- LED SMD indoor digital clock.
- Hour and minute display (HM).
- Fixed time display, or alternating with other information.
- Wall mounting (recess-mounted version)
- Operation and electronics similar to a standard Style 5. The mechanics differ whether for recess mounting in a wall or a partition.
- Available LED colours: red.



Recess-mounted version

COMPLIANCE

- Directives: LVD 2014/35/EU, EMC 2014/30/EU, RED 2014/53/EU.

TECHNICAL FEATURES

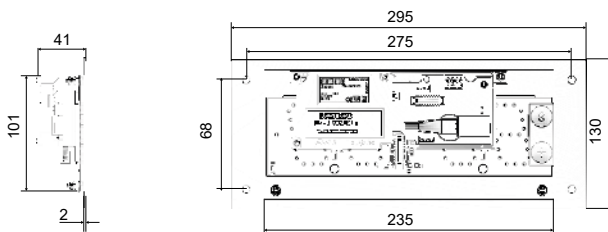
General features

- Similar as Style 5 standard.

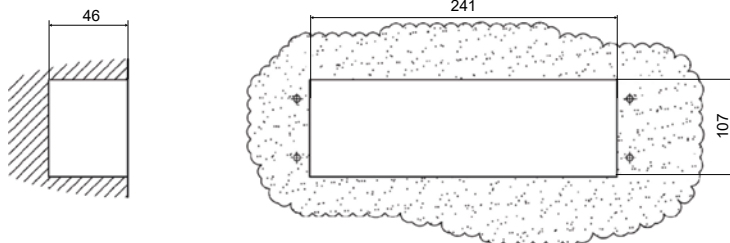
Mechanical features

- Construction..... Casing: Black steel.
Glass: Anti-glare PMMA glass (matte finish)
- Protection index..... IP40, IK07
- Operating temperature.... 0°C to +50°C.
- Weight..... 0.650 kg.
NTP model: 0.630 kg.
- Dimensions..... See hereinafter.

Clock



Recess mounting



Dimensions in mm

Electrical features

- Similar as Style 5 standard.

REFERENCES) - STYLE 5 RECESS MOUNTED

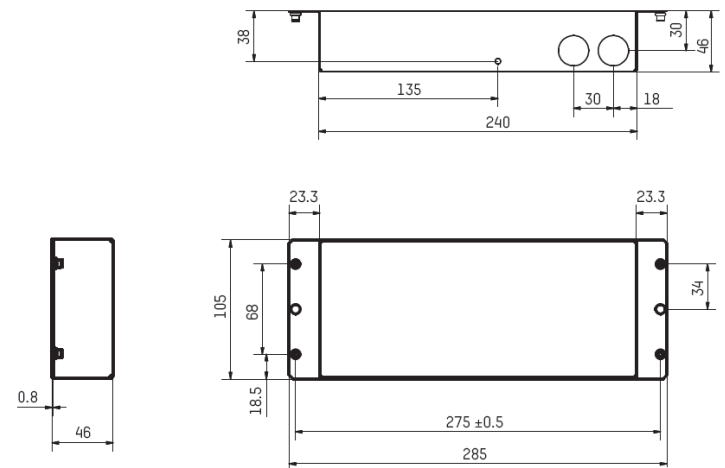
- 946 111 F..... Independent model.
- 946 121 F..... Impulse model.
- 946 141 F..... DHF* model.
- 946 151 F..... AFNOR model.
- 946 171 F..... NTP/ETH model

*Recess mounting possible except on metallic partition or equivalent.

REFERENCES) - STYLE 5 RECESS MOUNTED

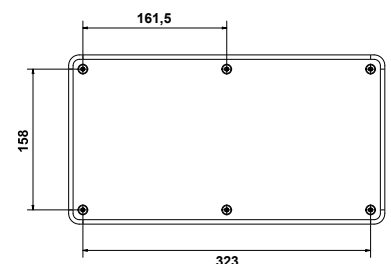
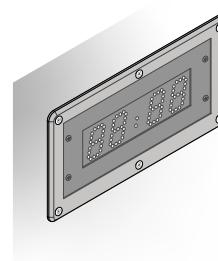
- 946 011..... Flush mounting back cover.
- 946 030..... IK10 protective glass.

Flush mounting back cover



IK10 protective glass.

- Construction..... Black-painted metal frame (colour similar to the clock)
Transparent polycarbonate glass.



Dimensions in mm