



# Time management

Synchronising • Distributing • Displaying time

## Style 10 - Standard



www.bodet-time.com

MADE IN FRANCE

### PRESENTATION

- LED SMD indoor digital clock with built-in temperature sensor.
- Hour and minute display (HM).
- Fixed time display or alternating with other information.
- Wall or bracket arm mounting (standard version).
- Available LED colours: red, green, yellow, blue and white.

### COMPLIANCE

- Directives: LVD 2014/35/EU, EMC 2014/30/EU, RED 2014/53/EU, IEEE 802.11 b/g/n (NTP/Wi-Fi model).

### TECHNICAL FEATURES

#### General features

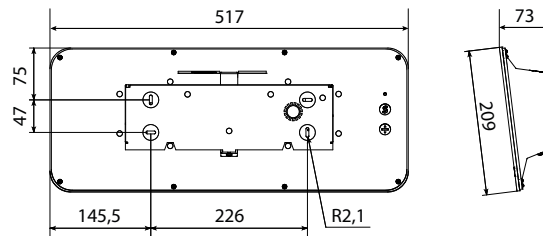
- Reading distance..... 60 m.
- Reading angle..... 160°
- Digits..... - Height: 10 cm.  
- Design: 7 segments with 5 LEDs each.
- HM separation..... Colon made of LEDs.
- Display..... - 12H or 24H mode  
- With or without 0 for time, day, month (NTP/ETH model).  
- AM/PM indicator.
- Alternating display... (the nature of information displayed can vary depending on the model) - Date : day/month, month/day, Month/year, year/month.  
- Number: day of the year, week of the year.  
- Temperature: °C.
- Brightness..... 4 levels: 25%, 50%, 75% or 100%.
- Eco mode..... Programmable energy saving or Predefined over a time period. Brightness level can be adjusted in eco mode (NTP/ETH model).
- Time change..... Automatic summer/winter time changeover and perpetual calendar.
- Time base backup..... - Independent model: 15 days in case of power failure.  
- Impulse model: in case of power failure, data saving and impulse reception without battery.  
- NTP model: behaviour can be programmed in case of loss of synchronisation after more than 48h.  
- Other models: at each start up, the clock waits for a synchronisation signal.
- Time accuracy..... 0.1 sec /day at 25°C.
- Operation..... Silent.
- Configuration..... 2 touch-screen buttons.
- NTP/ETH and NTP/Wi-Fi models..... - Unicast, multicast and DHCP synchronisation.  
- Advanced and intuitive configuration from the embedded web server.



Standard version

#### Mechanical features

- Construction..... Casing: Black ABS/PMMA. Other colours upon request. Glass: Anti-glare PMMA glass (matte finish)
- Protection index..... IP40, IK07
- Operating temperature.... -5°C to +55°C.
- Weight..... 2.1 kg.
- Dimensions..... See hereinafter.



Dimensions in mm

#### Electrical features

- Power supply..... - Independent, impulse, AFNOR, DHF radio and NTP/Wi-Fi models: 100-240V~.  
- ALS+ DCF radio model: 230V~.  
- NTP/ETH model: PoE (Power over Ethernet) – Class 0.
- Max consumption ..... 100-240V~, 250-150 mA. 230V~, 60 mA. NTP/ETH model: - red, green, yellow: 4.8W. - blue, white: 1.9W.
- Electrical protection..... NTP/ETH model: Class 3. Other models: Class 2.



# Time management

Synchronising • Distributing • Displaying time

## Style 10 - Standard



### REFERENCE(S) - STYLE 10 STANDARD

946 71x.....	Independent model.
946 72x.....	Impulse model.
946 73x.....	ALS+ DCF model.
946 74x.....	DHF model.
946 75x.....	AFNOR model.
946 77x.....	NTP/ETH model.
946 78x.....	NTP/Wi-Fi model.

Replace the "x" in the reference number to specify the LED colour:



### ACCESSORIES- STYLE 10 STANDARD

946 005.....	Double-sided bracket arm
946 006.....	Single-sided bracket arm.
946 080.....	External Wi-Fi antenna.

Bracket arm mounting (ceiling or mast)

- Construction..... Black steel.

Bracket arm (single-sided mounting)



Bracket arm (double-sided mounting)



Dimensions in mm



# Time management

Synchronising • Distributing • Displaying time

## Style 10 - Recess mounted

### PRESENTATION

- LED SMD indoor digital clock.
- Hour and minute display (HM).
- Fixed time display or alternating with other information.
- Wall mounting (recess-mounted version)
- Operation and electronics similar to a standard Style 10. The mechanics differ whether for recess mounting in a wall or a partition.
- Available LED colours: red.



Recess-mounted version

### COMPLIANCE

- Directives: LVD 2014/35/EU, EMC 2014/30/EU, RED 2014/53/EU.

### TECHNICAL FEATURES

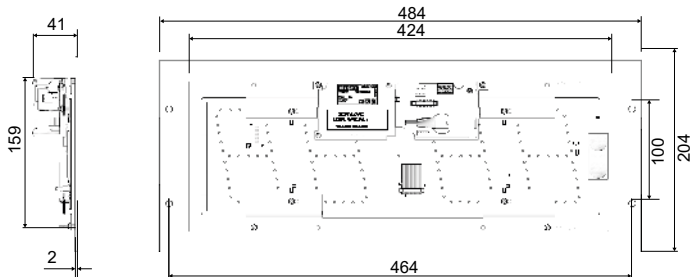
#### General features

- Similar to Style 10 standard.

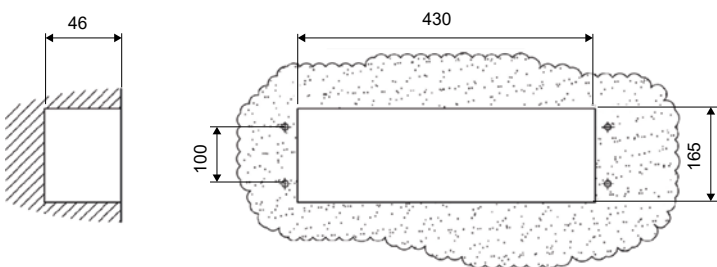
#### Mechanical features

- Construction..... Casing: Black steel.  
Glass: Anti-glare PMMA glass (matte finish)
- Protection index..... IP40, IK07
- Operating temperature.... 0°C to +50°C.
- Weight..... 1.220 kg.  
NTP model: 1.180 kg.
- Dimensions..... See hereinafter.

#### Clock



#### Recess mounting



Dimensions in mm

#### Electrical features

- Similar to Style 10 standard.

### REFERENCE(S) - STYLE 10 RECESS MOUNTED

946 711 F ..... Independent model.

946 721 F..... Impulse model.

946 741 F..... DHF\* model.

946 751 F..... AFNOR model.

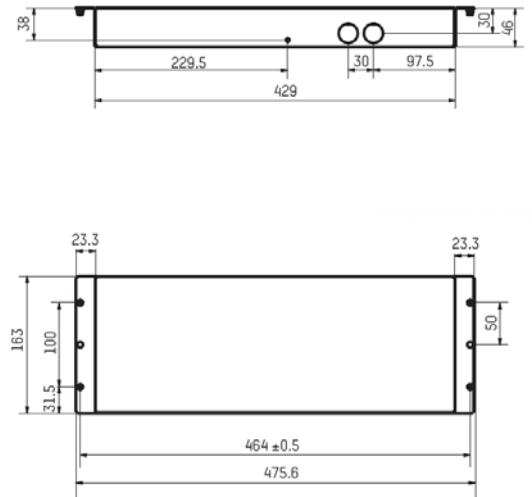
946 771 F..... NTP/ETH model

\*Recess mounting possible except on metallic partition or equivalent.

### ACCESSORIES- STYLE 10 RECESS MOUNTED

946 017..... Flush mounting back cover.

#### Flush mounting back cover



Dimensions in mm



# Time management

Synchronising • Distributing • Displaying time

## Style 10 - Waterproof



www.bodet-time.com

MADE IN FRANCE

### PRESENTATION

- LED SMD indoor digital clock.
- Hour and minute display (HM).
- Fixed time display or alternating with other information.
- Operation and electronics similar to a standard Style 10. The mechanics differ to ensure IP65 watertightness.
- Available LED colours: red.



Waterproof version

### COMPLIANCE

- Directives: LVD 2014/35/EU, EMC 2014/30/EU, RED 2014/53/EU.

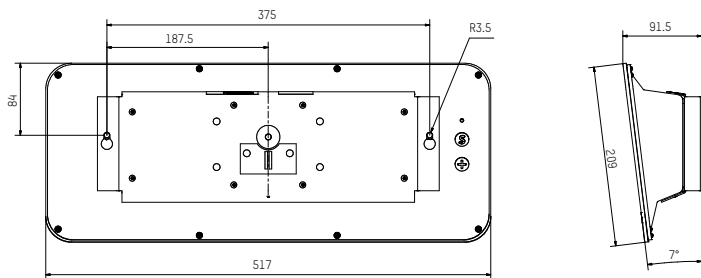
### TECHNICAL FEATURES

#### General features

- Similar to Style 10 standard.

#### Mechanical features

- Similar to Style 10 standard.
- Construction..... Waterproof grommets and silicone seals installed between the bracket and the clock's casing.
- Protection index..... IP65, IK07
- Dimensions..... See hereinafter.



Dimensions in mm

#### Electrical features

- Similar to Style 10 standard.

### REFERENCE(S) - STYLE 10 WATERPROOF

- 946 711 A..... Independent model.
- 946 721 A..... Impulse model.
- 946 741 A..... DHF model.
- 946 751 A..... AFNOR model.
- 946 771 A..... NTP/ETH model